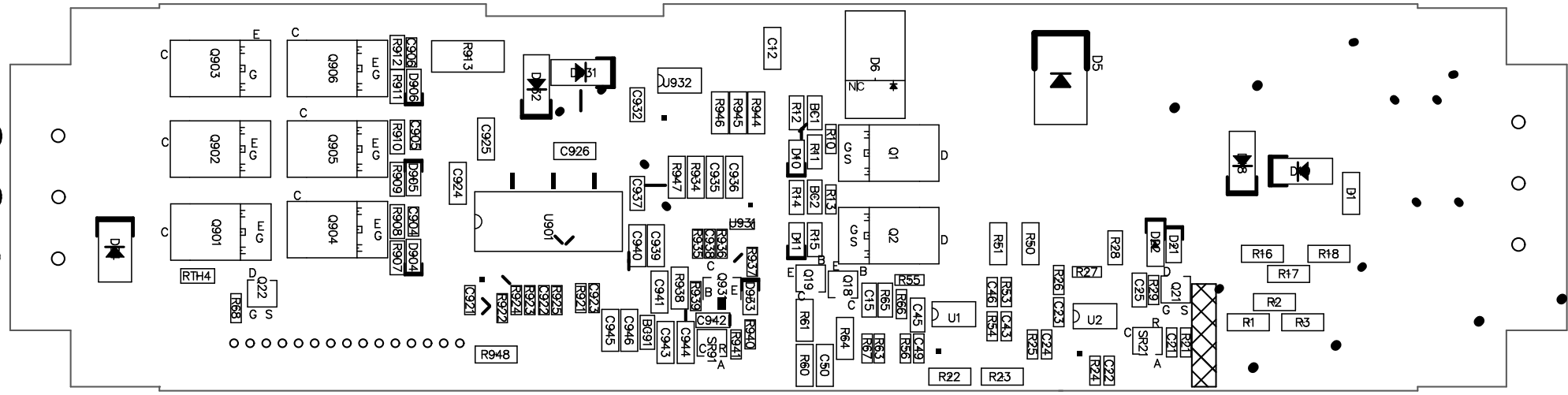


(FG) 3
(AC/N) 2
(AC/L) 1



Multiplex Composite Print

3 (W)
2 (V)
1 (U)



BLDC-200B

2021/01/29

Edward

CN91



R963

R965

R964

C980

C976

R989

C975

C971

C977

R972

C981

U951

LED2

C967

C962
R962
C968

R975

C969

LED1

CN94

20 1

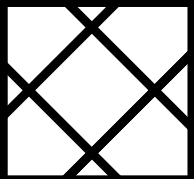
10 9



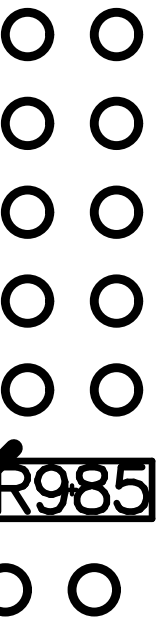
1

15

CN93



94V-0
HZ MV1



R985

D953

D956

R961

C961

R976

Q961

C965

C966

R984

R969

R967

R977

R968

C983

C979

R966

C964

R978

R986

R981

C970

R991

Q963

R990

R980

R987

R988

D944

D955

R979

R982

R983

U952

R994

R993

R995

D942

C982

